

Tocojy Energy Investments Pty. Ltd

“we value quality & deliver as promised”

Company

Profile

|About us

Tocojy Energy Investments (Pty) Ltd is a South African Company that Specializes in Power Systems and Automation Solutions. The company was formed in 2017 by **Colin Bailey**, **Tshepo Malatjie** and **Jeffrey Nkgudi**. The purpose of the company is to offer reliable and efficient services to the customers in the field of Electrical Engineering, and is 100% black owned.



|Vision |Mission |Value

|Vision

Our vision is to build a sustainable business that forms a solid foundation for future expansion and exploration of other business opportunities and be the preferred, reliable engineers in and offer the best services that will meet clients' demands and expectations.

|Mission

- To conduct our business in highly transparent manner that will not short-change out customers.
- To build a good business relationship with our clients based on honesty & integrity.
- To offer high quality services & ensure in the total satisfaction of our clients.
- Reaching and practise optimal financial performances by ensuring the best service delivery and affordable to our clients.
- Create valuable employment opportunities to the people in the area we operate.
- To uphold the values professionalism & due care whenever we offer services.
- Be a good corporate citizen promoting intercultural & racial tolerance in our staff.
- To offer a comprehensive course covering the fundamentals of power system protection, current best practise, protection system management & new developments in protection technology

|Values

Our corporation believes & thrives through the following values:

- Accountability & Professionalism
- Honesty & Integrity
- Professional competence & due care, professional behaviour



| Our Services

At Tocojy Energy Investments (Pty) Ltd we offer the following Services:

- Electrical Engineering (HV, MV & LV Power Systems)

- * Design
- * Panel Wiring
- * Relay Logic Engineering
- * Factory Acceptance Testing
- * Commissioning
- * SCADA
- * Maintenance



| Programming of Protection Relays

- Logic engineering or programming of SEL, ABB, Siemens-Reyrolle, Schneider-Micom, Alstom-Micom, Thytronic, LPS GCE, Vamp, Strike, Woodward, GE Multilin, RED-DA and Tapcon relays
- Programming of ION meters, Elster and Landis meters

| Commissioning & Testing

- Protection and Control Commissioning of Substations
- Objective & Scope
The objective of the commissioning & testing is to verify the correct integration of primary & secondary Protection, Control & Metering Equipment for each Transformer, Motor & Feeder Bay, with the objective of signing each bay off as ready to be energized with primary voltage.
- Testing all Primary Equipment
 - Circuit Breakers
 - Current Transformers
 - Voltage Transformers
 - Power Transformers
 - NEC/NER/ Auxiliary Transformers
- Proving Equipment Wiring to Design Drawings
 - Circuit Breakers
 - Transformer Auxiliary Wiring
 - Tap Change Drive
 - Control Panel
- Proving & Testing all Secondary Cables
 - Continuity
 - Insulation resistance
 - Core & Cable Numbers
- Apply Relay Settings & Logic
- Secondary inject relays & other secondary equipment
- Function test complete scheme

| Substation Maintenance & Fault Analysis

| Upgrades/ Retrofits/ Modification

| Cable Termination

| Panel wiring & Testing

| Building Electrical installation & Commissioning

| SCADA

Affirmative Action Policy

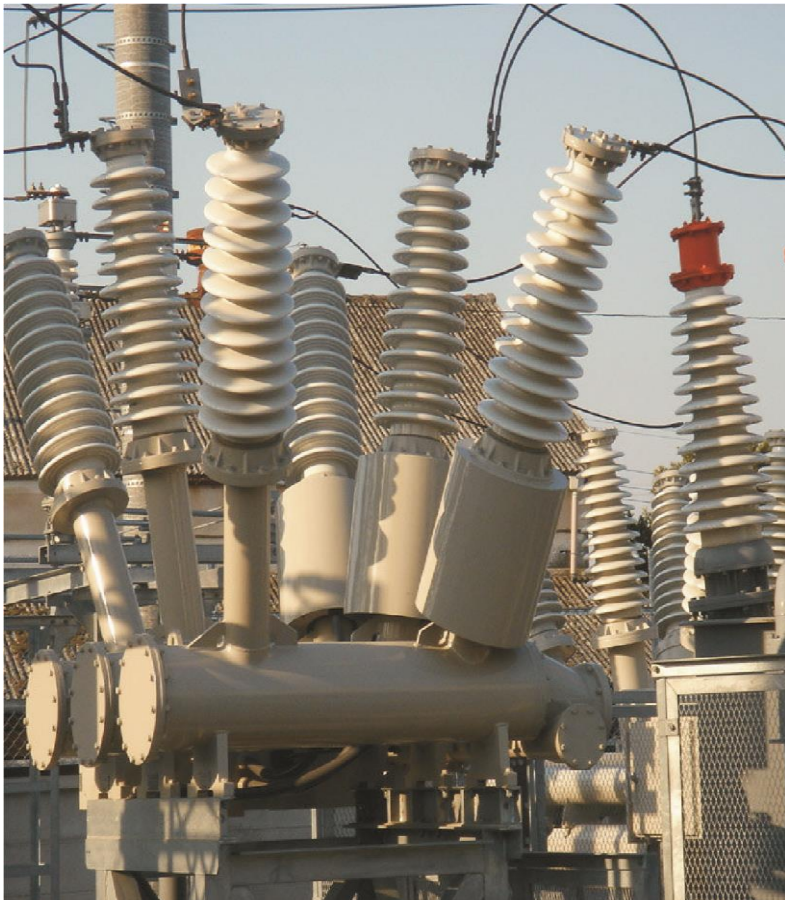
We as company are committed to support the Government initiatives regarding a new labour law & employment equity act. We therefore undertake to offer equal employment opportunities to aspiring & employed personnel without regard to the person's gender, race or tribe.

We believe that our policy would contribute to a more stable & prosperous economy within community & within the broader South Africa.

Skills Development

At Tocojy Energy Investments (Pty) Ltd we undertake to invest in the development of skills in our labour force. The company shall contribute resources available at its disposal to ensure that our workforce is properly trained in the relevant fields.

Through the work to be established, we will seek to empower our candidates with skills & expertise that will increase their value in the labour market.



Quality Policy Statement

Tocojy Energy Investments (Pty) Ltd is an entity that prides itself with quality services. That is why we have made it part of our mission to offer quality guaranteed services to our valued clients & ensure that they are satisfied.

To Ensure that the Services we offer are done to satisfaction of each individual client, our employees undergo training on the services offered & we will put in place procedure of obtaining client feedback on the services rendered.

It is also our policy to make follow ups on all customer queries concerning our services & products, & addressing them as urgently as possible much to their satisfaction.

Safety & Healthy Policy

The company shall strive towards implementation of procedures, which prevent injury or loss & assure the health & safety of our employees.

The company & management place loss incident prevention & the health of its employees as the most important aspects of its operation & in this regard recognize & understands their responsibilities in terms of the O.H.S Act.

The attitude & co-operation of each employee shall ensure that the health & safety conditions are achieved and losses minimized.

The staff & management are committed to active participation in the implementation of the accident prevention policy.

|Member's Profile

|Mr. Bailey Colin Sibusiso

Director

With over 11 years' experience on a complete Turnkey Solution in Substations & having done projects in countries like South Africa, Swaziland, Zambia, South Sudan & Kenya including commissioning of IPP (Solar and Windfarms) Substations, he is now one of three directors at Tocojy Energy Investments (Pty) Ltd.

He obtained his National Diploma in Electrical Engineering (Heavy Current) and attended Protection courses throughout SADC, he worked at Bulembu Ministries Swaziland as an Electrical Supervisor, at Swaziland Electricity Company as a Protection Technician and at Conco Consolidated Power Projects (Conco Energy Solutions) as a Senior Factory Acceptance Testing Engineer and as a Senior Commissioning Engineering before deciding to embark on his new journey & putting his dream into action, forming Tocojy Energy Investments (Pty) Ltd with two other gentlemen with the same mind set. He is registered as a Professional Engineering Technician with the Engineering Council of South Africa (ECSA) Reg No: 2018600080.

Projects Completed by Colin under CONCO Energy Solutions (Pty) Ltd

- ❖ **Kathu IPP Solar Substation, WBHO and Building Energy - 2013**
Commissioning of 132/22kV 160MVA Kathu IPP Solar Substation
- ❖ **132kV Fox Distribution Substation - Eskom - 2013**
Commissioning of 132kV Fox Distribution Substation
- ❖ **ZESCO (Zambia) – 2013, 2014**
Commissioning of 66/11kV 63MVA Luangwa substation and 33/11kV 63MVA Ngwerere Substation
- ❖ **Swaziland Electricity Company – 2013,2014,2015**
Commissioning of 66/11kV 20MVA Thompson Substation, 66/11kV 10MVA Siteki Substation and 66/11kV 10MVA Siphofaneni Substation
- ❖ **Amakhala Emoyeni IPP Windfarm Substation, Nordex - 2015**
Relay Logics Engineering and Commissioning of 132/22kV 160MVA Amakhala Emoyeni IPP Windfarm Substation
- ❖ **Nojoli IPP Wind Farm Substation, Vestas (Enel) - 2016**
Commissioning of 132/33kV 60MVA Nojoli Wind Farm Substation
- ❖ **Kenya Power and Lighting Company (KPLC)- 2015**
Commissioning of 220/66/11kV 45MVA with **Breaker and Half Schemes** at Kainuk Substation and 220kV **Breaker and Half Schemes** Feeders at Turkwell Substation
- ❖ **City of Tshwane - 2017**
Relay Logic Engineering, Factory Acceptance Testing and Commissioning of 132/11kV 60MVA at Eldoraigue Substation
- ❖ **City of Tshwane - 2017**
Relay Logic Engineering, Factory Acceptance Testing and Commissioning of 132/11kV 80MVA at Mamelodi 3 Substation
- ❖ **And many more.**

|Mr. Malatjie Tshepo Clarence

Director

After graduating at the reputable Vaal University of Technology (VUT) in 2012 with Cum Laude for National Diploma in Electrical Engineering. Currently he is studying towards his Btech: Electrical Engineering with University of South Africa.

With his qualifications & credentials he started working at Siemens, then worked at ABB & Conco Energy Solutions as Commissioning Engineer. His Experience in Electrical Engineering & related fields is well over 6 years' experience & having done projects in countries like Zambia, DRC Congo, Ghana & Mauritius, he is currently registered with ECSA as Candidate Engineering Technician Reg No: 201320577. He is now one of the three Directors of Tocojy Energy Investments (Pty) Ltd since 2017.

Projects Completed by Tshepo under CONCO Energy Solutions (Pty) Ltd

- ❖ **Transnet Freight Rail - 2015**
Retrofitting and Commissioning of new **PROTECTA** Distance Protection Relays at 25KV AC Substations between De Aar and Beaufort West
- ❖ **City Power - 2015**
Commissioning of 88/11kV 180MVA Cydna Substation
- ❖ **Vestas (Enel) - 2016**
Commissioning of 132/33kV 60MVA Nojoli Wind Farm Substation
- ❖ **CEN Power (Ghana) - 2016**
Commissioning of 10 x161kV **Breaker and Half Schemes** Feeders at Collector Substation (Ghana)
- ❖ **City of Tshwane - 2017**
Commissioning of 132/11kV 60MVA at Eldoraigue Substation
- ❖ **City of Tshwane - 2017**
Commissioning of 132/11kV 80MVA at Mamelodi 3 Substation
- ❖ **City of Tshwane - 2017/2018**
Installing and Commissioning the Power Quality Meters in various City of Tshwane Substations
- ❖ **SNEL (DRC) - 2018**
Retrofitting and Commissioning with ABB REF630 Numerical Relays for 380V in Inga Hydro Power Station (DRC)
- ❖ **And many more.**

|Mr. Nkgudi Mphekgo Jeffrey

Director

After graduating at the Tshwane University of Technology (TUT) in 2012 for National Diploma in Electrical Engineering. Currently he is studying towards his Btech: Electrical Engineering with University of South Africa.

With his qualifications & credentials he started working at Siemens & then worked at ABB as a Test Technician. His Experience in Electrical Engineering & related fields is well over 4 years & he is Currently Registered with ECSA as Candidate Engineering Technician Reg No: 201520221. He is now one of the three Directors of Tocojy Energy Investments (Pty) Ltd since 2017.

Projects Completed by Jeffrey under Siemens (Pty) Ltd

- ❖ **Eskom – 2016**
Kusile Power Station unit 1 & 2 400VAC Boards FAT and Commissioning
Matla Power Station unit 1 400VAC Boards FAT and Commissioning
- ❖ **Arcelor Mittal – 2016**
FAT on new stove MCC extension boards 6.6KV 10x NXAIR Switchgear Panels
- ❖ **Eskom (Kusile Power Station) - 2017**
FAT on Unit 3, 4, 5, & 6 400VAC and Softstarter 690VAC
- ❖ **Eskom Corp 11KV NXPLUS C FAT – 2017/2018**
Motsatsi 12x Switchgear Panels, Carrinton 9x Switchgear Panels, Mogonare Park SWS 12x Switchgear Panels, Kirstenbosch 7x Switchgear Panels, Shippard 9x Switchgear Panels, River Crescent 8x Switchgear Panels, Central Business 17x Switchgear Panels, James Watt 16x Switchgear Panels
- ❖ **Eskom (Duvha Power Station) – 2018**
Factory Acceptance Testing unit 6 3.3KV service board A&B 16x Switchgear Panels
Factory Acceptance Testing unit 6 3.3KV service board C&D 19x Switchgear Panels
Factory Acceptance Testing unit 6 11KV 19x GIS Panels
- ❖ **And many more.**

|Company Details

Enterprise Name : Tocojy Energy Investments (Pty) Ltd
Enterprise Type : Private Company
Registration number : 2017/189290/07
Income tax number : 9078466233
VAT No. : 4370286330
B-BBEE Status Level : Level 1
Physical Address : A15 Co Space
Corner Brand Road and Swart Drive
President Park
Midrand, 1685

Postal Address : Same as Physical Address

Activities : Electrical Engineering

Directors : Bailey Colin Sibusiso
: Malatjie Tshepo Clarence
: Nkgudi Mphekgo Jeffrey

|Contact Details

Cell Numbers

Colin Bailey : (+27) 78 837 9238
: (+27) 73 900 6118

Tshepo Malatjie : (+27) 78 961 2588
: (+27) 60 960 3391

Jeffrey Nkgudi : (+27) 60 571 4693

Email : info@tocojyenergy.co.za

Website : www.tocojyenergy.co.za

Projects

Completed Projects

- ❖ **Nelson Mandela Metro (Conco Energy Solutions) - 2018**
Relays Logic Engineering and Factory Acceptance Testing of 14 x 132kV Feeders for Nelson Mandela Metro (Chatty) Substation
- ❖ **Greenyellow - Mauritius (Conco Energy Solutions) - 2018**
Relays Logic Engineering and Factory Acceptance Testing of 22/66kV 14MVA for Solitude Mauritius PV Solar Substation
- ❖ **Blyvooruitzicht Mine - EHL (Conco Energy Solutions) - 2018**
Relays Logic Engineering and Factory Acceptance Testing of 132/6.6kV 20MVA for Substation
- ❖ **Omnia Fertilizer - (Conco Energy Solutions) - 2018**
Relays Logic Engineering and Factory Acceptance Testing of 14 x 11kV Actom Switchgear
- ❖ **Ballito Hills Project - (Conco Energy Solutions) 2018**
Relays Logic Engineering and Factory Acceptance Testing of 10 x 11kV Actom Switchgear
- ❖ **Ampco Elite Substation (Conco Energy Solutions) - 2018**
Relays Logic Engineering and Factory Acceptance Testing of 25 x 11kV Actom Switchgear
- ❖ **Greenam Kokerboom PV Plant 66KV Project - 2018**
Commissioning of 66kV 10MW Greenam Kokerboom PV Plant Substation to Nampower Transmission Substation (Namibia)
- ❖ **Greenam Mariental PV Plant 66KV Project - 2018**
Commissioning of 66kV 10MW Greenam Mariental PV Plant Substation to Nampower Hardap Substation (Namibia)
- ❖ **22/66KV Solitude PV Solar Plant Substation (Conco Energy Solutions) - 2018**
Commissioning of 14MVA Solitude 22/66kV Solar PV Plant Substation all the way to Central Electricity Board (CEB) for GreenYellow in Mauritius
- ❖ **88/11KV Hartbeesfontein Substation (Conco Energy Solutions) - 2018**
Commissioning of 5x Extension 11kV Switchgear Panels for Ekurhuleni Municipality
- ❖ **11KV Witfontein North & South Substations (Conco Energy Solutions) - 2018**
Relays Logic Engineering and Factory Acceptance Testing of 14 x 11kV Actom Switchgear
- ❖ **11kV Orchards Nelspruit Substation (Conco Energy Solutions) - 2018**
Relays Logic Engineering and Factory Acceptance Testing of 9 x 11kV Actom Switchgear

- ❖ **400/220/132/33kV BPC Various Substations (Conco Energy Solutions) - 2018**
Substations Fault Analysis and Providing/Implementing Solutions on the Network
- ❖ **400/220/33kV BPC Letlhakane Substation (Conco Energy Solutions) – 2018/2019**
Scheme Relays Logic Engineering and Factory Acceptance Testing for **Botswana Power Corporation**: 2x 400/220/33kV Transformer Feeders, 2x 33kV Line Reactor Feeders, 2x 400KV Line Feeders, 2x 400kV Bus Couplers, 3x 400kV Line Reactor Feeders, 2x 400kV Bus Sections, 1x 400kV Buszone, 1x 220kV Buszone, 4x 220kV Line Feeders and 1x 220kV Buscoupler.
- ❖ **22/132KV Witkop PV Solar Plant Substation (Polokwane) - 2019**
Commissioning/Maintenance of 2x 20MVA Transformers and 11x 22KV Switchgear Feeders at Witkop 22/132kV Solar PV Plant Substation
- ❖ **132/6.6kV 20MVA Blyvoor Mine Substation: (Conco Energy Solutions) 2019**
Factory Acceptance Testing of 20MVA 132/6.6kV Transformer Panel for Blyvoor Mine Substation

Current Projects:

- ❖ **Oukasie and Brits 2 Substations (Kapa Bokoni Trading & Projects) – 2018/2019**
Scheme Design, Relays Logic Engineering, Panel wiring, Factory Acceptance Testing, Installation and commissioning of 88/11kV 10MVA substation. (Brits – South Africa)
- ❖ **132/33kV 110.4 MW Perderkraal Windfarm Substation: Witzenburg Municipality Western Cape (Conco Energy Solutions) 2019**
Relays Logic Engineering and Factory Acceptance Testing of 132/33kV Perderkraal 110.4 MW Windfarm Project. Full IEC61850 configuration and testing
- ❖ **132/33kV 140.3 MW Kangnas Windfarm Substation: Nama Khoi Local Municipality Northern Cape (Conco Energy Solutions) - 2019**
Relays Logic Engineering and Factory Acceptance Testing of 132/33kV Kangnas 140.3 MW Windfarm Project. Full IEC61850 configuration and testing
- ❖ **88/11KV Hartbeesfontein Substation (Conco Energy Solutions) - 2019**
Commissioning of 40MVA 88/11KV Transformer for Ekurhuleni Municipality
- ❖ **220kV Interconnecting Transmission Substation: Grupotec Kenya (Conco Energy Solutions) - 2019**
Scheme Relays Logic Engineering and Factory Acceptance Testing for **Grupotec Kenya**: 4 x **220kV breaker and a half schemes** with **2 x 220kV Tie breakers** and **220kV Buszone**. Full IEC61850 configuration and testing
- ❖ **220/33kV 40 MW Selenkei PV Substation: Grupotec Kenya (Conco Energy Solutions) - 2019**
Relays Logic Engineering and Factory Acceptance Testing of 220/33kV 40 MW PV Project Substation. Full IEC61850 configuration and testing.

❖ **220/33kV 40 MW Cedate PV Substation: Grupotec Kenya (Conco Energy Solutions) - 2019**

Relays Logic Engineering and Factory Acceptance Testing of 220/33kV 40 MW PV Project Substation.
Full IEC61850 configuration and testing.